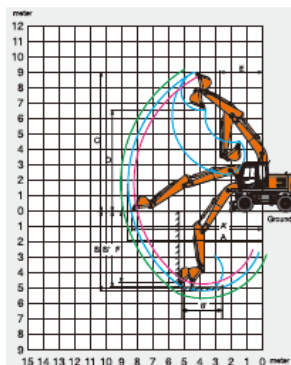


WORKING RANGES

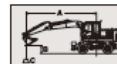


	2.10 m	2.52 m	3.01 m
A Max. digging reach	8 040	8 410	8 870
A' Max. digging reach (on ground)	7 840	8 210	8 690
B Max. digging depth	4 610	5 030	5 520
B' Max. digging depth (B level)	4 380	4 830	5 340
C Max. cutting height	8 660	8 800	9 100
D Max. dumping height	6 240	6 440	6 760
E Min. swing radius	2 610	2 690	2 910
F Max. vertical wall	4 110	4 520	4 990
Bucket digging force ISO	99 kN (10 100 kg)		
Bucket digging force SAE PCSA	86 kN (9 290 kg)		
Arm crowd force ISO	73 kN (7 470 kg)	85 kN (8 640 kg)	99 kN (10 100 kg)
Arm crowd force SAE PCSA	71 kN (7 200 kg)	83 kN (8 430 kg)	97 kN (9 770 kg)

ZX140W-3 WITH 2.10 M ARM

Metric measure

1. Ratings are based on SAE J1097.
2. Lifting capacity of the Z4/IS Series does not exceed 75% of tipping load with the machine on firm, level ground or 87% full hydraulic capacity.
3. The load point is a hook (or standard equipment) located on the back of the bucket.
4. *Indicates load limited by hydraulic capacity.
5. 0 m = Ground.



- A: Load radius
- B: Load point height
- C: Lifting capacity

	Stabilization	Load radius					At max. reach	Meter
		3.0 m	4.0 m	5.0 m	6.0 m	7.0 m		
7.0 m	Rear blade up						11.2	11.2
	Rear blade down						11.2	11.2
	Rear outrigger down						11.2	11.2
	Front outrigger and rear blade down						11.2	11.2
	Front blade and rear outrigger down						11.2	11.2
6.0 m	Rear blade up						11.2	11.2
	Rear blade down						11.2	11.2
	Rear outrigger down						11.2	11.2
	Front outrigger and rear blade down						11.2	11.2
	Front blade and rear outrigger down						11.2	11.2
5.0 m	Rear blade up						11.2	11.2
	Rear blade down						11.2	11.2
	Rear outrigger down						11.2	11.2
	Front outrigger and rear blade down						11.2	11.2
	Front blade and rear outrigger down						11.2	11.2
4.0 m	Rear blade up						11.2	11.2
	Rear blade down						11.2	11.2
	Rear outrigger down						11.2	11.2
	Front outrigger and rear blade down						11.2	11.2
	Front blade and rear outrigger down						11.2	11.2
3.0 m	Rear blade up						11.2	11.2
	Rear blade down						11.2	11.2
	Rear outrigger down						11.2	11.2
	Front outrigger and rear blade down						11.2	11.2
	Front blade and rear outrigger down						11.2	11.2
2.0 m	Rear blade up						11.2	11.2
	Rear blade down						11.2	11.2
	Rear outrigger down						11.2	11.2
	Front outrigger and rear blade down						11.2	11.2
	Front blade and rear outrigger down						11.2	11.2
1.0 m	Rear blade up						11.2	11.2
	Rear blade down						11.2	11.2
	Rear outrigger down						11.2	11.2
	Front outrigger and rear blade down						11.2	11.2
	Front blade and rear outrigger down						11.2	11.2
0 m	Rear blade up						11.2	11.2
	Rear blade down						11.2	11.2
	Rear outrigger down						11.2	11.2
	Front outrigger and rear blade down						11.2	11.2
	Front blade and rear outrigger down						11.2	11.2
-1.0 m	Rear blade up						11.2	11.2
	Rear blade down						11.2	11.2
	Rear outrigger down						11.2	11.2
	Front outrigger and rear blade down						11.2	11.2
	Front blade and rear outrigger down						11.2	11.2
-2.0 m	Rear blade up						11.2	11.2
	Rear blade down						11.2	11.2
	Rear outrigger down						11.2	11.2
	Front outrigger and rear blade down						11.2	11.2
	Front blade and rear outrigger down						11.2	11.2
-3.0 m	Rear blade up						11.2	11.2
	Rear blade down						11.2	11.2
	Rear outrigger down						11.2	11.2
	Front outrigger and rear blade down						11.2	11.2
	Front blade and rear outrigger down						11.2	11.2
-4.0 m	Rear blade up						11.2	11.2
	Rear blade down						11.2	11.2
	Rear outrigger down						11.2	11.2
	Front outrigger and rear blade down						11.2	11.2
	Front blade and rear outrigger down						11.2	11.2

LIFTING CAPACITIES

ZX140W-3 with 2.52 m ARM

Metric measure

1. Ratings are based on SAE J1097.
2. Lifting capacity of the Z4/IS Series does not exceed 75% of tipping load with the machine on firm, level ground or 87% full hydraulic capacity.
3. The load point is a hook (or standard equipment) located on the back of the bucket.
4. *Indicates load limited by hydraulic capacity.
5. 0 m = Ground.



- A: Load radius
- B: Load point height
- C: Lifting capacity

	Stabilization	Load radius					At max. reach	Meter
		3.0 m	4.0 m	5.0 m	6.0 m	7.0 m		
7.0 m	Rear blade up						11.2	11.2
	Rear blade down						11.2	11.2
	Rear outrigger down						11.2	11.2
	Front outrigger and rear blade down						11.2	11.2
	Front blade and rear outrigger down						11.2	11.2
6.0 m	Rear blade up						11.2	11.2
	Rear blade down						11.2	11.2
	Rear outrigger down						11.2	11.2
	Front outrigger and rear blade down						11.2	11.2
	Front blade and rear outrigger down						11.2	11.2
5.0 m	Rear blade up						11.2	11.2
	Rear blade down						11.2	11.2
	Rear outrigger down						11.2	11.2
	Front outrigger and rear blade down						11.2	11.2
	Front blade and rear outrigger down						11.2	11.2
4.0 m	Rear blade up						11.2	11.2
	Rear blade down						11.2	11.2
	Rear outrigger down						11.2	11.2
	Front outrigger and rear blade down						11.2	11.2
	Front blade and rear outrigger down						11.2	11.2
3.0 m	Rear blade up						11.2	11.2
	Rear blade down						11.2	11.2
	Rear outrigger down						11.2	11.2
	Front outrigger and rear blade down						11.2	11.2
	Front blade and rear outrigger down						11.2	11.2
2.0 m	Rear blade up						11.2	11.2
	Rear blade down						11.2	11.2
	Rear outrigger down						11.2	11.2
	Front outrigger and rear blade down						11.2	11.2
	Front blade and rear outrigger down						11.2	11.2
1.0 m	Rear blade up						11.2	11.2
	Rear blade down						11.2	11.2
	Rear outrigger down						11.2	11.2
	Front outrigger and rear blade down						11.2	11.2
	Front blade and rear outrigger down						11.2	11.2
0 m	Rear blade up						11.2	11.2
	Rear blade down						11.2	11.2
	Rear outrigger down						11.2	11.2
	Front outrigger and rear blade down						11.2	11.2
	Front blade and rear outrigger down						11.2	11.2
-1.0 m	Rear blade up						11.2	11.2
	Rear blade down						11.2	11.2
	Rear outrigger down						11.2	11.2
	Front outrigger and rear blade down						11.2	11.2
	Front blade and rear outrigger down						11.2	11.2
-2.0 m	Rear blade up						11.2	11.2
	Rear blade down						11.2	11.2
	Rear outrigger down						11.2	11.2
	Front outrigger and rear blade down						11.2	11.2
	Front blade and rear outrigger down						11.2	11.2
-3.0 m	Rear blade up						11.2	11.2
	Rear blade down						11.2	11.2
	Rear outrigger down						11.2	11.2
	Front outrigger and rear blade down						11.2	11.2
	Front blade and rear outrigger down						11.2	11.2
-4.0 m	Rear blade up						11.2	11.2
	Rear blade down						11.2	11.2
	Rear outrigger down						11.2	11.2
	Front outrigger and rear blade down						11.2	11.2
	Front blade and rear outrigger down						11.2	11.2

ZX140W-3 with 3.01 m ARM

Metric measure

1. Ratings are based on SAE J1097.
2. Lifting capacity of the Z4/IS Series does not exceed 75% of tipping load with the machine on firm, level ground or 87% full hydraulic capacity.
3. The load point is a hook (or standard equipment) located on the back of the bucket.
4. *Indicates load limited by hydraulic capacity.
5. 0 m = Ground.



- A: Load radius
- B: Load point height
- C: Lifting capacity

	Stabilization	Load radius					At max. reach	Meter
		3.0 m	4.0 m	5.0 m	6.0 m	7.0 m		
7.0 m	Rear blade up						11.2	11.2
	Rear blade down						11.2	11.2
	Rear outrigger down						11.2	11.2
	Front outrigger and rear blade down						11.2	11.2
	Front blade and rear outrigger down						11.2	11.2
6.0 m	Rear blade up						11.2	11.2
	Rear blade down						11.2	11.2
	Rear outrigger down						11.2	11.2
	Front outrigger and rear blade down						11.2	11.2
	Front blade and rear outrigger down						11.2	11.2
5.0 m	Rear blade up						11.2	11.2
	Rear blade down						11.2	11.2
	Rear outrigger down						11.2	11.2
	Front outrigger and rear blade down						11.2	11.2
	Front blade and rear outrigger down						11.2	11.2
4.0 m	Rear blade up						11.2	11.2
	Rear blade down						11.2	11.2
	Rear outrigger down						11.2	11.2
	Front outrigger and rear blade down						11.2	11.2
	Front blade and rear outrigger down						11.2	11.2
3.0 m	Rear blade up						11.2	11.2
	Rear blade down						11.2	11.2
	Rear outrigger down						11.2	11.2
	Front outrigger and rear blade down						11.2	11.2
	Front blade and rear outrigger down						11.2	11.2
2.0 m	Rear blade up						11.2	11.2
	Rear blade down						11.2	11.2
	Rear outrigger down						11.2	11.2
	Front outrigger and rear blade down						11.2	11.2
	Front blade and rear outrigger down						11.2	11.2
1.0 m	Rear blade up						11.2	11.2
	Rear blade down						11.2	11.2
	Rear outrigger down						11.2	11.2
	Front outrigger and rear blade down						11.2	11.2
	Front blade and rear outrigger down						11.2	11.2
0 m	Rear blade up						11.2	11.2
	Rear blade down						11.2	11.2
	Rear outrigger down						1	

EQUIPMENT

ZAXIS 140W

STANDARD EQUIPMENT

Standard equipment may vary by country, so please consult your Hitachi dealer for details.

ENGINE

- H/P mode control
- E mode control
- 50 A alternator
- Dry-type air filter with evacuator valve (with safety element)
- Cartridge-type engine oil filter
- Cartridge-type fuel double filters
- Air cleaner double filters
- Radiator, oil cooler and intercooler with dust protective net
- Radiator reserve tank
- Fan guard
- Isolation-mounted engine
- Auto idle system
- Electrical fuel feed pump
- Engine oil drain coupler

HYDRAULIC SYSTEM

- Work mode selector
- E/P control system
- Quick warm-up system for pilot circuit
- Shockless valve in pilot circuit
- Boom-arm anti-drift valve
- Brake valves for travel circuits
- Control valve with main relief valve
- Extra port for control valve
- Suction filter
- Full-flow filter
- Pilot filter
- Swing dampener valve
- Steering filter
- Outrigger are individually controlled

UPPERSTRUCTURE

- Undercover
- Fuel level float
- Hydraulic oil level gauge
- Rearview mirrors, left and right
- Swing parking brake
- Swing lock

UNDERCARRIAGE

- Parking brake
- Toolbox left chassis
- Traction tyres pattern tires (10.00-20 16 PR)
- Tire spacer
- 4 tie down hooks

FRONT ATTACHMENTS

- HN bushing
- WC (tungsten-carbide) thermal spraying
- Reinforced resin thrust plate
- Flanged pin
- Centralized lubrication system
- Dirt seal on all bucket pins

CAB

- CRSS II (Center Pilar Reinforced Structure) cab
- OPG top guard fitted Level I (ISO 10252) compliant cab
- All-weather sound-suppressed steel cab
- Equipped with reinforced, tinted (green color) glass windows
- 4 lips-filled elastic mounts
- Windows on upper, lower-front and left side can opened
- Intermittent windshield retractable wipers
- Front window washer
- Footrest
- Electric double horn
- AM - FM radio with digital clock
- Retractable seat belt
- Drink holder
- Cigar lighter
- Ashtray
- Storage box
- Glove compartment
- Floor mat
- Short wrist control levers
- Pilot control shut-off lever with fit-up console
- Engine shut-off switch
- Auto control air conditioner
- Adjustable reclining seat with adjustable armrests
- Suspension seat
- Sun visor
- Room lamp (staly type)

LIGHTS AND SIGNALS

- Two headlights
- Working lights
- Combination lamps
- Turn signal lamps
- Brake lamps
- Clearance lamps
- Hazard lamps

MONITOR SYSTEM

- Meter:
 - Speedometer, Tachometer, Hour meter, Odometer, Trip meter
 - Engine coolant temperature gauge, Hydraulic brake pressure gauge, Fuel gauge, Clock
- Alarms:
 - Overheat, Engine warning, Engine oil pressure, Alternator, Minimum fuel level, Hydraulic filter restriction, Air filter restriction, Brake oil pressure, Operation signal, Operate signal is abnormal for Outrigger Blade, Operate signal is abnormal for electrical lever, Network, Work mode, Lock lever
- Pilot lamp:
 - Digging mode, Auto-Idle, Auto acceleration, Engine pre-heat, Parking brake, Working brake, Axle lock, Attachment (Breaker & crusher), Work light, Outrigger / Blade

COLUMN-MONITOR

- Pilot lamp:
 - Turn signals, Head light high beam, Hazard warning signals, FNR indication, Clearance light, Pilot out, Low speed

ALARM BUZZERS

- Front attachment operation while parking brake is on, Engine oil pressure, Engine overheat, Brake pressure, Overload, Error of electrical lever

MISCELLANEOUS

- Standard tool kit
- Lockable machine covers
- Lockable fuel filling cap
- Skid-resistant tapes, plates and handrails
- Travel direction mark on chassis frame
- Onboard information controller

OPTIONAL EQUIPMENT

Optional equipment may vary by country, so please consult your Hitachi dealer for details.

UNDERCARRIAGE

- Rear dozer blade
- Rear outriggers
- Front dozer blade + rear outrigger
- Front outrigger + rear dozer blade
- Front outrigger + rear outrigger
- Right toolbox

ATTACHMENTS

- Parts for hammer and crusher
- Hammer and crusher piping
- 2 pump combined flow assist piping
- Welded bucket link A with welded hook
- Pilot accumulator

CAB

- Air suspension seat with heater
- 12 V power source
- Rain guard
- Transparent roof (with slide curtain)
- Front glass lower guard
- Front glass upper guard

LIGHT

- Additional cab roof front light
- Additional cab roof rear light
- Rotating lamp
- Additional boom light with cover
- License lamp

OTHERS

- Hose rupture valve
- Pre-cleaner
- Biodegradable oil
- High-performance full flow filter (with restriction indicator)
- Electric fuel mixing pump with auto stop
- Rear view camera

ZAXIS 140W