

# SPECIFICATIONS

## ENGINE

Model .....	Isuzu AQ-6HK1X
Type .....	4-cycle water-cooled, common rail direct injection
Aspiration .....	Variable geometry turbocharged, intercooled, cooled EGR
Aftertreatment .....	DOC and SCR system
No. of cylinders .....	6
Rated power	
ISO 14396 .....	197 kW at 1 900 min <sup>-1</sup>
ISO 9249, net .....	186 kW at 1 900 min <sup>-1</sup>
SAE J1349, net .....	186 kW at 1 900 min <sup>-1</sup>
Maximum torque .....	1 050 Nm at 1 500 min <sup>-1</sup>
Piston displacement .....	7.790 L
Bore and stroke .....	115 mm x 125 mm
Batteries .....	2 x 12 V / 135 Ah

## HYDRAULIC SYSTEM

### Hydraulic Pumps

Main pumps .....	3 variable displacement axial piston pumps
Maximum oil flow .....	2 x 235 L/min
	1 x 211 L/min
Pilot pump .....	1 gear pump
Maximum oil flow .....	36.4 L/min

### Hydraulic Motors

Travel .....	2 variable displacement axial piston motors
Swing .....	1 axial piston motor

### Relief Valve Settings

Implement circuit .....	34.3 MPa
Swing circuit .....	32.4 MPa
Travel circuit .....	34.3 MPa
Pilot circuit .....	3.9 MPa
Power boost .....	38.0 MPa

### Hydraulic Cylinders

	Quantity	Bore	Rod diameter
Boom	2	135 mm	95 mm
Arm	1	150 mm	105 mm
Bucket	1	135 mm	90 mm
Positioning *1	1	150 mm	100 mm

\*1 : For 2-piece boom

## UPPERSTRUCTURE

### Revolving Frame

D-section frame for resistance to deformation.

### Swing Device

Axial piston motor with planetary reduction gear is bathed in oil. Swing circle is single-row. Swing parking brake is spring-set/hydraulic-released disc type.

Swing speed .....	10.3 min <sup>-1</sup>
Swing torque .....	90.5 kNm

### Operator's Cab

Independent spacious cab, 1 005 mm wide by 1 675 mm high, conforming to ISO\* Standards.

\* International Organization for Standardization

## UNDERCARRIAGE

### Tracks

Heat-treated connecting pins with dirt seals. Hydraulic (grease) track adjusters with shock-absorbing recoil springs.

### Numbers of Rollers and Shoes on Each Side

Upper rollers .....	2
Lower rollers .....	8
Track shoes .....	48
Track guards .....	3

### Travel Device

Each track driven by 2-speed axial piston motor.

Parking brake is spring-set/hydraulic-released disc type.

Automatic transmission system: High-Low.

Travel speeds .....	High : 0 to 5.2 km/h
	Low : 0 to 3.1 km/h

Maximum traction force .. 246 kN

Gradeability .....

70% (35 degree) continuous

## SOUND LEVEL

Sound level in cab according to ISO 6396 ..... LpA 69 dB(A)

External sound level according to ISO 6395 and

EU Directive 2000/14/EC ..... LwA 105 dB(A)

## SERVICE REFILL CAPACITIES

Fuel tank .....	510.0 L
Engine coolant .....	46.0 L
Engine oil .....	48.0 L
Swing device .....	12.0 L
Travel device (each side) .....	9.2 L
Hydraulic system .....	294.0 L
Hydraulic oil tank .....	156.0 L
DEF/AdBlue® tank .....	70.0 L

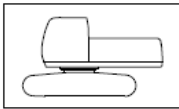
## WEIGHTS AND GROUND PRESSURE

### Operating Weight and Ground Pressure

			ZAXIS 300LC				ZAXIS 300LCN			
Boom type			Monoblock		2-Piece		Monoblock		2-Piece	
Shoe type	Shoe width	Arm length	kg	kPa	kg	kPa	kg	kPa	kg	kPa
Triple grouser	600 mm	2.42 m	30 100	57	30 800	58	29 900	56	30 600	57
		3.11 m	30 200	57	30 800	58	30 000	56	30 700	58
	700 mm	2.42 m	30 500	49	31 100	50	30 300	49	30 900	50
		3.11 m	30 600	49	31 100	50	30 400	49	31 000	50
	800 mm	2.42 m	30 900	43	31 500	44	30 700	43	31 300	44
		3.11 m	31 000	43	31 500	44	30 800	43	31 400	44
	900 mm	2.42 m	31 300	39	31 900	40	31 000	39	31 700	40
		3.11 m	31 300	39	32 000	40	31 200	39	31 900	40

Including 1.25 m<sup>3</sup> (ISO heaped) bucket weight (960 kg) and counterweight (5 600 kg).

### Basic Machine Weight and Overall Width



Excluding front end attachment, fuel, hydraulic oil and coolant etc. Including counterweight.

#### ZAXIS 300LC

Shoe width	Weight	Overall width
600 mm	23 800 kg	3 190 mm
700 mm	24 100 kg	3 290 mm
800 mm	24 500 kg	3 390 mm
900 mm	24 900 kg	3 490 mm

#### ZAXIS 300LCN

Shoe width	Weight	Overall width
600 mm	23 600 kg	2 990 mm
700 mm	24 000 kg	3 090 mm
800 mm	24 400 kg	3 190 mm
900 mm	24 800 kg	3 290 mm

### Components Weight

	Weight
Counterweight	5 600 kg
Monoblock boom (with arm cylinder and boom cylinder)	3 130 kg
2-Piece boom (with arm cylinder and boom cylinder)	3 790 kg
Arm 2.42 m (with bucket cylinder)	1 350 kg
Arm 3.11 m (with bucket cylinder)	1 430 kg
Bucket 1.25 m <sup>3</sup>	960 kg

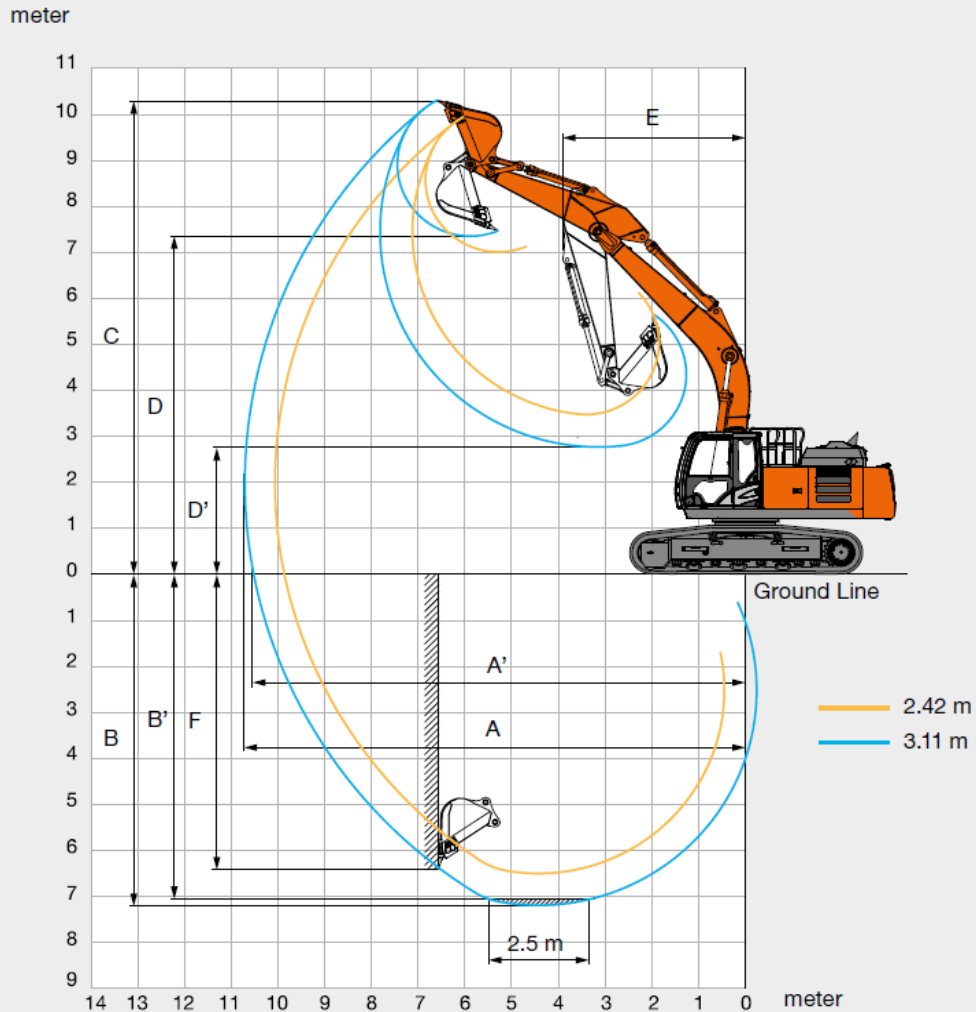
## BUCKET AND ARM DIGGING FORCE

Arm length	ZAXIS 300LC / ZAXIS 300LCN	
	2.42 m	3.11 m
Bucket digging force* ISO	202 kN	
Bucket digging force* SAE : PCSA	175 kN	
Arm crowd force* ISO	182 kN	144 kN
Arm crowd force* SAE : PCSA	174 kN	138 kN

\* At power boost

# SPECIFICATIONS

## WORKING RANGES: MONOBLOCK BOOM

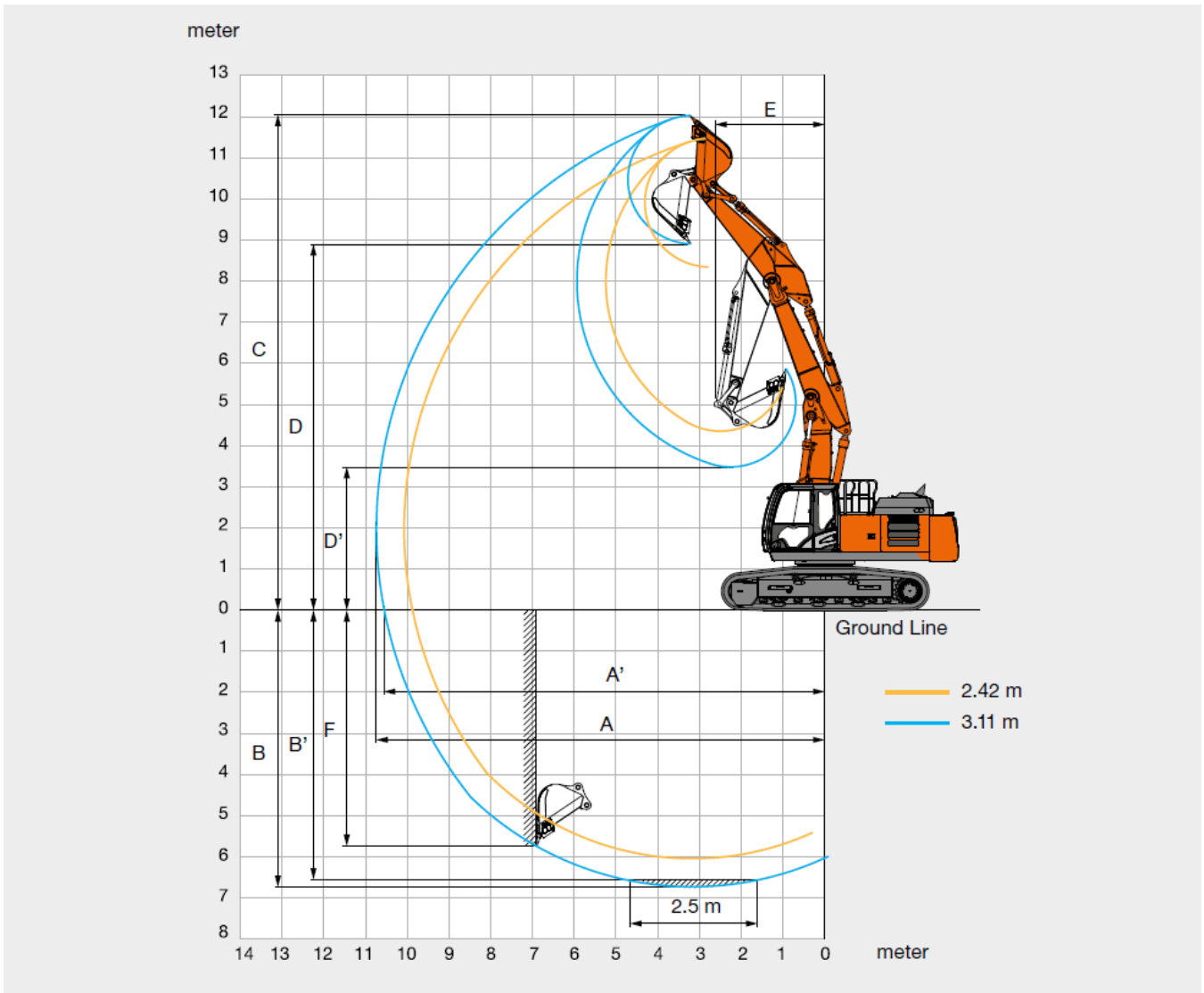


Unit: mm

	ZAXIS 300LC / ZAXIS 300LCN	
	Monoblock boom	
Arm length	2.42 m	3.11 m
A Max. digging reach	10 600	10 710
A' Max. digging reach (on ground)	9 860	10 520
B Max. digging depth	6 530	7 220
B' Max. digging depth for 2.5 m level	6 310	7 040
C Max. cutting height	9 910	10 270
D Max. dumping height	6 980	7 330
D' Min. dumping height	3 450	2 740
E Min. swing radius	4 060	3 900
F Max. vertical wall digging depth	5 650	6 480

Excluding track shoe lug

## WORKING RANGES: 2-PIECE BOOM



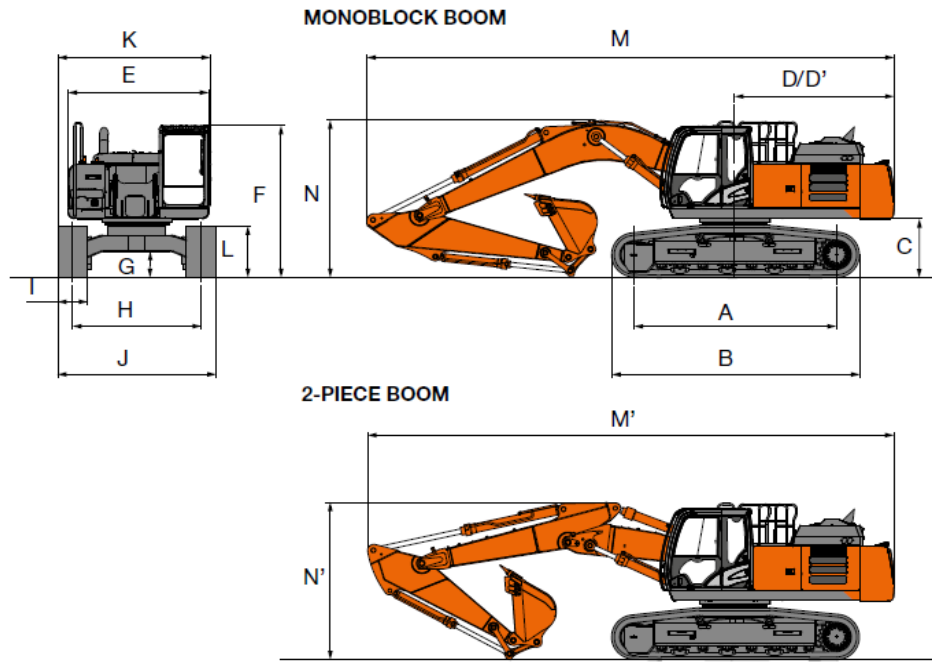
Unit: mm

	ZAXIS 300LC / ZAXIS 300LCN	
	2-Piece boom	
Arm length	2.42 m	3.11 m
A Max. digging reach	10 080	10 740
A' Max. digging reach (on ground)	9 880	10 530
B Max. digging depth	6 050	6 740
B' Max. digging depth for 2.5 m level	5 950	6 640
C Max. cutting height	11 450	12 020
D Max. dumping height	8 330	8 900
D' Min. dumping height	4 340	3 470
E Min. swing radius	2 870	2 640
F Max. vertical wall digging depth	5 060	5 820

Excluding track shoe lug

# SPECIFICATIONS

## DIMENSIONS



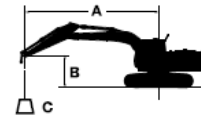
Unit: mm

	ZAXIS 300LC	ZAXIS 300LCN
A Distance between tumblers	4 050	4 050
B Undercarriage length	4 940	4 940
* C Counterweight clearance	1 130	1 130
D Rear-end swing radius	3 210	3 210
D' Rear-end length	3 250	3 250
E Overall width of upperstructure	2 990	2 990
F Overall height of cab	3 120	3 120
* G Min. ground clearance	510	510
H Track gauge	2 590	2 390
I Track shoe width	G 600	G 600
J Undercarriage width	3 190	2 990
K Overall width	3 190	2 990
* L Track height with triple grouser shoes	1 070	1 070
<b>MONOBLOCK BOOM</b>		
M Overall length		
With arm 2.42 m	10 710	10 710
With arm 3.11 m	10 620	10 620
N Overall height of boom		
With arm 2.42 m	3 450	3 450
With arm 3.11 m	3 200	3 200
<b>2-PIECE BOOM</b>		
M' Overall length		
With arm 2.42 m	10 600	10 600
With arm 3.11 m	10 580	10 580
N' Overall height of boom		
With arm 2.42 m	3 200	3 200
With arm 3.11 m	3 140	3 140

\* Excluding track shoe lug    G: Triple grouser shoe

# LIFTING CAPACITIES

- Notes:
1. Ratings are based on ISO 10567.
  2. Lifting capacity does not exceed 75% of tipping load with the machine on firm, level ground or 87% full hydraulic capacity.
  3. The load point is the center-line of the bucket pivot mounting pin on the arm.
  4. \*Indicates load limited by hydraulic capacity.
  5. 0 m = Ground.



- A: Load radius  
B: Load point height  
C: Lifting capacity

For lifting capacities, subtract bucket and quick hitch weight from lifting capacities.

## ZAXIS 300LC MONOBLOCK BOOM

Rating over-front Rating over-side or 360 degrees Unit : kg

Conditions	Load point height m	Load radius												At max. reach		
		1.5 m		3.0 m		4.5 m		6.0 m		7.5 m		9.0 m				meter
Boom 6.20 m Arm 2.42 m Counterweight 5 600 kg Shoe 600 mm	6.0							*8 010	*8 010					*7 780	6 080	7.46
	4.5					*11 230	*11 230	*8 990	8 300	*8 000	5 930			*7 800	5 240	8.11
	3.0					*14 140	11 830	*10 280	7 900	*8 570	5 750			7 540	4 830	8.44
	1.5							*11 380	7 560	8 840	5 570			7 370	4 690	8.49
	0 (Ground)					*16 220	11 040	*11 950	7 360	8 710	5 460			7 590	4 800	8.27
	-1.5			*10 340	*10 340	*15 690	11 060	*11 830	7 310	8 690	5 440			8 310	5 230	7.75
	-3.0			*18 750	*18 750	*14 200	11 220	*10 800	7 410					*9 050	6 230	6.86
	-4.5			*14 530	*14 530	*11 080	*11 080							*8 920	8 880	5.42
Boom 6.20 m Arm 3.11 m Counterweight 5 600 kg Shoe 600 mm	6.0							*7 110	*7 110	*6 920	6 160			*4 730	*4 730	8.19
	4.5					*9 800	*9 800	*8 160	*8 160	*7 360	6 010			*4 720	4 670	8.78
	3.0					*12 750	12 210	*9 550	8 030	*8 050	5 810	*5 560	4 400	*4 880	4 330	9.09
	1.5					*15 130	11 430	*10 850	7 640	*8 760	5 600	*6 390	4 310	*5 210	4 220	9.14
	0 (Ground)					*16 170	11 060	*11 700	7 370	8 700	5 440			*5 790	4 290	8.93
	-1.5	*6 810	*6 810	*10 240	*10 240	*16 090	10 980	*11 910	7 260	8 620	5 370			*6 790	4 600	8.45
	-3.0	*11 890	*11 890	*16 470	*16 470	*15 080	11 060	*11 360	7 280	*8 670	5 420			*8 400	5 300	7.65
	-4.5			*17 500	*17 500	*12 830	11 320	*9 470	7 490					*8 580	6 900	6.39

## ZAXIS 300LCN MONOBLOCK BOOM

Rating over-front Rating over-side or 360 degrees Unit : kg

Conditions	Load point height m	Load radius												At max. reach		
		1.5 m		3.0 m		4.5 m		6.0 m		7.5 m		9.0 m				meter
Boom 6.20 m Arm 2.42 m Counterweight 5 600 kg Shoe 600 mm	6.0							*8 010	7 950					*7 780	5 600	7.46
	4.5					*11 230	*11 230	*8 990	7 630	*8 000	5 460			*7 800	4 820	8.11
	3.0					*14 140	10 730	*10 280	7 230	*8 570	5 280			7 510	4 430	8.44
	1.5							*11 380	6 900	8 800	5 110			7 340	4 300	8.49
	0 (Ground)					*16 220	9 980	*11 950	6 710	8 670	5 000			7 550	4 400	8.27
	-1.5			*10 340	*10 340	*15 690	9 990	*11 830	6 660	8 660	4 980			8 280	4 790	7.75
	-3.0			*18 750	*18 750	*14 200	10 150	*10 800	6 760					*9 050	5 700	6.86
	-4.5			*14 530	*14 530	*11 080	10 500							*8 920	8 100	5.42
Boom 6.20 m Arm 3.11 m Counterweight 5 600 kg Shoe 600 mm	6.0							*7 110	*7 110	*6 920	5 690			*4 730	*4 730	8.19
	4.5					*9 800	*9 800	*8 160	7 790	*7 360	5 540			*4 720	4 290	8.78
	3.0					*12 750	11 100	*9 550	7 370	*8 050	5 340	*5 560	4 040	*4 880	3 980	9.09
	1.5					*15 130	10 350	*10 850	6 980	*8 760	5 130	*6 390	3 950	*5 210	3 860	9.14
	0 (Ground)					*16 170	9 990	*11 700	6 720	8 660	4 980			*5 790	3 930	8.93
	-1.5	*6 810	*6 810	*10 240	*10 240	*16 090	9 910	*11 910	6 610	8 580	4 910			*6 790	4 210	8.45
	-3.0	*11 890	*11 890	*16 470	*16 470	*15 080	9 990	*11 360	6 640	8 640	4 960			*8 400	4 850	7.65
	-4.5			*17 500	*17 500	*12 830	10 240	*9 470	6 830					*8 580	6 310	6.39

# LIFTING CAPACITIES

## ZAXIS 300LC 2-PIECE BOOM

Rating over-front Rating over-side or 360 degrees Unit : kg

Conditions	Load point height m	Load radius										At max. reach				
		1.5 m		3.0 m		4.5 m		6.0 m		7.5 m		9.0 m		meter		
2-Piece Boom Arm 2.42 m Counterweight 5 600 kg Shoe 600 mm	9.0													*7 570	*7 570	4.65
	7.5													*5 660	*5 660	6.41
	6.0			*10 280	*10 280									*4 910	*4 910	7.47
	4.5			*13 970	*13 970	*9 630	*9 630							*4 570	*4 570	8.12
	3.0			*18 390	*18 390	*13 650	12 230	*7 820	*7 820					*4 460	*4 460	8.45
	1.5			*22 780	*22 780	*16 330	12 620	*10 500	8 250	*6 070	5 570			*4 550	*4 550	8.50
	0 (Ground)	*14 080	*14 080	*25 340	23 140	*16 380	11 970	*10 410	7 810	*6 870	5 500			*4 840	4 780	8.28
	-1.5	*21 260	*21 260	*25 650	22 810	*16 630	11 650	*11 420	7 580	*6 460	5 450			*5 440	5 220	7.76
	-3.0	*28 700	*28 700	*23 760	22 960	*15 230	11 510	*9 620	7 490					*5 550	*5 550	6.86
2-Piece Boom Arm 3.11 m Counterweight 5 600 kg Shoe 600 mm	9.0					*6 960	*6 960							*5 790	*5 790	5.79
	7.5					*6 650	*6 650	*5 720	*5 720					*4 670	*4 670	7.27
	6.0					*7 200	*7 200	*5 820	*5 820	*4 970	*4 970			*4 150	*4 150	8.22
	4.5			*13 690	*13 690	*8 440	*8 440	*6 300	*6 300	*5 110	*5 110			*3 900	*3 900	8.81
	3.0	*12 420	*12 420	*19 630	*19 630	*11 360	*11 360	*7 850	*7 850	*5 460	*5 460	*4 210	*4 210	*3 830	*3 830	9.12
	1.5			*21 720	*21 720	*16 270	12 080	*9 520	8 410	*5 960	5 750	*4 480	4 290	*3 890	*3 890	9.16
	0 (Ground)	*12 250	*12 250	*24 200	23 590	*16 270	12 180	*11 080	8 000	*6 510	5 640			*4 110	*4 110	8.96
	-1.5	*16 940	*16 940	*25 600	22 890	*16 410	11 700	*10 940	7 690	*7 040	5 460			*4 550	*4 550	8.48
	-3.0	*21 690	*21 690	*25 040	22 780	*16 380	11 560	*11 310	7 460	*6 440	5 440			*5 380	5 290	7.68
-4.5	*24 440	*24 440	*20 080	*20 080	*12 240	11 490							*6 620	*6 620	5.92	

## ZAXIS 300LCN 2-PIECE BOOM

Rating over-front Rating over-side or 360 degrees Unit : kg

Conditions	Load point height m	Load radius										At max. reach				
		1.5 m		3.0 m		4.5 m		6.0 m		7.5 m		9.0 m		meter		
2-Piece Boom Arm 2.42 m Counterweight 5 600 kg Shoe 600 mm	9.0													*7 570	*7 570	4.65
	7.5													*5 660	*5 660	6.41
	6.0			*10 280	*10 280									*4 910	*4 910	7.47
	4.5			*13 970	*13 970	*9 630	*9 630							*4 570	*4 570	8.12
	3.0			*18 390	*18 390	*13 650	11 270	*7 820	7 450					*4 460	4 370	8.45
	1.5			*22 780	21 410	*16 330	11 490	*10 500	7 570	*6 070	5 090			*4 550	4 260	8.50
	0 (Ground)	*14 080	*14 080	*25 340	20 390	*16 380	10 860	*10 410	7 210	*6 870	5 030			*4 840	4 370	8.28
	-1.5	*21 260	*21 260	*25 650	20 090	*16 630	10 550	*11 420	6 910	*6 460	4 980			*5 440	4 780	7.76
	-3.0	*28 700	*28 700	*23 760	20 230	*15 230	10 420	*9 620	6 830					*5 550	*5 550	6.86
2-Piece Boom Arm 3.11 m Counterweight 5 600 kg Shoe 600 mm	9.0					*6 960	*6 960							*5 790	*5 790	5.79
	7.5					*6 650	*6 650	*5 720	*5 720					*4 670	*4 670	7.27
	6.0					*7 200	*7 200	*5 820	*5 820	*4 970	*4 970			*4 150	*4 150	8.22
	4.5			*13 690	*13 690	*8 440	*8 440	*6 300	*6 300	*5 110	*5 110			*3 900	*3 900	8.81
	3.0	*12 420	*12 420	*19 630	*19 630	*11 360	*11 240	*7 850	*7 850	*5 460	5 430	*4 210	4 010	*3 830	*3 830	9.12
	1.5			*21 720	21 490	*16 270	11 820	*9 520	7 730	*5 960	5 350	*4 480	3 930	*3 890	3 810	9.16
	0 (Ground)	*12 250	*12 250	*24 200	20 810	*16 270	11 060	*11 080	7 330	*6 510	5 170			*4 110	3 880	8.96
	-1.5	*16 940	*16 940	*25 600	20 160	*16 410	10 600	*10 940	7 030	*7 040	4 990			*4 550	4 180	8.48
	-3.0	*21 690	*21 690	*25 040	20 050	*16 380	10 450	*11 310	6 800	*6 440	4 970			*5 380	4 830	7.68
-4.5	*24 440	*24 440	*20 080	*20 080	*12 240	10 390							*6 620	*6 620	5.92	

# EQUIPMENT

● : Standard equipment

○ : Optional equipment

## ENGINE

Aftertreatment device	●
Air cleaner double filters	●
Alternator 50 A	●
Auto idle system	●
Auto shut-down control	●
Cartridge-type engine oil filter	●
Cartridge-type fuel main filter	●
Cold fuel resistance valve	●
DEF/AdBlue® tank inlet strainer and extension filler	●
DEF/AdBlue® tank with ISO magnet adapter	●
Dry-type air filter with evacuator valve (with air filter restriction indicator)	●
Dust-proof indoor net	●
ECO/PWR mode control	●
Electrical fuel feed pump	●
Engine oil drain coupler	●
Expansion tank	●
Fan guard	●
Fuel cooler	●
Fuel pre-filter with water separator	●
Isolation-mounted engine	●
Maintenance free pre-cleaner	○
Radiator, oil cooler and intercooler	●

## HYDRAULIC SYSTEM

Auto power lift	●
Control valve with main relief valve	●
Full-flow filter	●
High mesh full flow filter with restriction indicator	○
Hose rupture valve for arm	●
Hose rupture valve for boom	●
Pilot filter	●
Power boost	●
Suction filter	●
Swing dampener valve	●
Two extra port for control valve	●
Variable reliefvalve for breaker & crusher	●
Work mode selector	●

## CAB

All-weather sound suppressed steel cab	●
AM-FM radio	●
Ashtray	●
Auto control air conditioner	●
AUX function lever (Breaker assist)	○
AUX terminal and storage	●
Cigarette lighter 24 V	●
CRES V (Center pillar reinforced structure) cab	●
Drink holder with hot & cool function	●
Electric double horn	●
Engine shut-off switch	●
Equipped with reinforced, tinted (green color) glass windows	●
Evacuation hammer	●
Fire extinguisher bracket	○
Floor mat	●
Footrest	●
Front window washer	●
Glove compartment	●
Hot & cool box	●
Intermittent windshield wipers	●
Key cylinder light	●
Laminated round glass window	○
LED room light with door courtesy	●
OPG front guard Level II (ISO10262) compliant cab	○
OPG top guard Level I (ISO10262) compliant cab	●
OPG top guard Level II (ISO10262) compliant cab	○
Pilot control shut-off lever	●
Power outlet 12 V	○
Rain guard	○
Rear tray	●
Retractable seat belt	●
ROPS (ISO12117-2) compliant cab	●
Rubber radio antenna	●
Seat : air suspension seat with heater	●
Seat adjustment part : backrest, armrest, height and angle, slide forward / back	●
Short wrist control levers	●
Sun visor (front window/side window)	○
Transparent roof with slide curtain	●
Windows on front, upper, lower and left side can be opened	●
2 speakers	●
4 fluid-filled elastic mounts	●

## MONITOR SYSTEM

Alarms: overhear, engine warning, engine oil pressure, alternator, minimum fuel level, hydraulic filter restriction, air filter restriction, work mode, overload, SCR system trouble, etc	●
Alarm buzzers: overhear, engine oil pressure, overload, SCR system trouble	●
Display of meters: water temperature, hour, fuel rate, clock, DEF/AdBlue® rate	●
Other displays: work mode, auto-idle, glow, rearview monitor, operating conditions, etc	●
32 languages selection	●

## LIGHTS

Additional boom light with cover	○
Additional cab roof front lights	○
Additional cab roof rear lights	○
Rotating lamp	○
2 working lights	●

## UPPER STRUCTURE

Batteries 2 x 135 Ah	●
Battery disconnect switch	●
Body top handrail	●
Counterweight 5 600 kg	●
Electric fuel refilling pump with auto stop and filter	●
Fuel level float	●
Hydraulic oil level gauge	●
Large size engine cover	●
Lockable fuel refilling cap	●
Lockable machine covers	●
Lockable tool box	●
Platform handrail	●
Rear view camera	●
Rear view mirror (right & left side)	●
Skid-resistant plates and handrails	●
Swing parking brake	●
Undercover	●
Utility space	●

## UNDERCARRIAGE

Bolt-on sprocket	●
Reinforced track links with pin seals	●
Shoe: 600 mm triple grouser	●
Track undercover	○
Travel direction mark on track frame	●
Travel motor covers	●
Travel parking brake	●
Upper and lower rollers	●
3 track guards (each side) and hydraulic track adjuster	●
4 tie down hooks	●

## FRONT ATTACHMENTS

Casted bucket link A	●
Centralized lubrication system	●
Dirt seal on all bucket pins	●
Flanged pin	●
HN bushing	●
Reinforced resin thrust plate	●
WC (tungsten-carbide) thermal spraying	●
Welded bucket link A	○

## ATTACHMENTS

Accessories for 2 speed selector	○
Additional pump (30 L/min)	○
Assist piping	○
Attachment basic piping	●
Breaker and crusher piping	●
Parts for breaker and crusher	●
Pilot accumulator	○

## MISCELLANEOUS

Global e-Service	●
Onboard information controller	●
Standard tool kit	●
Theft prevention system*	○



Standard and optional equipment may vary by country, so please consult your Hitachi dealer for details.  
\* Hitachi Construction Machinery cannot be held liable for theft, any system will just minimize the risk of theft.